
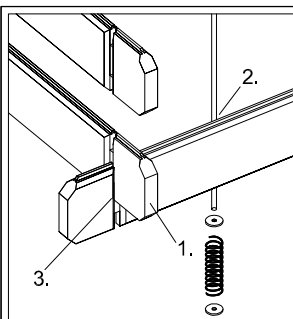


kylä/kunnanosa	tilan nimi/kortteli	tilan RN:o/ tontti	rakennustoimenpide <b>UUDISRAKENNUS</b>	juoks. N:o
hakija ja osoite			sisältö <b>PÄÄPIIRUSTUS</b>	mittakaava 1:100
rakennuspaikan osoite			<b>FLEXI 2</b> PÄÄPIIRUSTUS, SKAN HOLZ PIHARAKENNUS FLEXI 2, POHJAPIIRUSTUS, JULKISIVUT JA LEIKKAUS	
suunnittelija <b>Skan Holz Helme AS</b>			piirustusnumero	
allekirjoitus			päiväys	

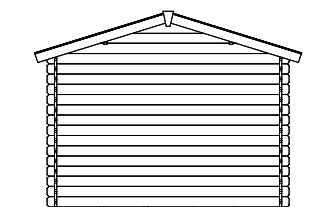
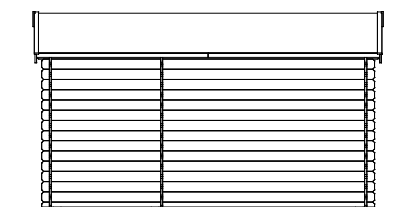
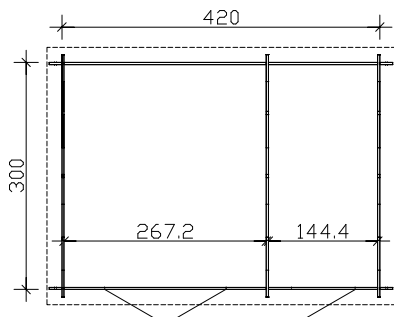
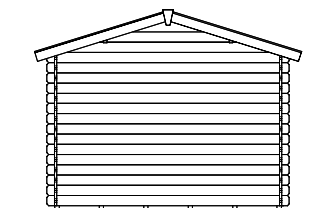
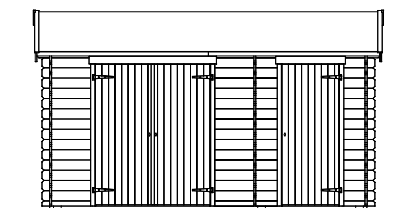
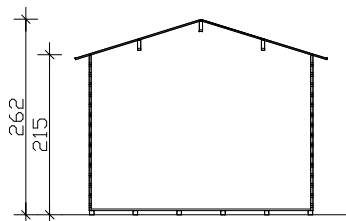
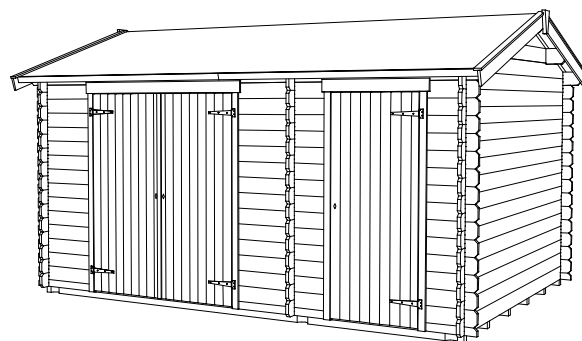


**SKAN HOLZ**  
Log cabins

1. 28mm planks as stable wall construction
2. concealed cross-bracing for optimum utilization of space
3. profiled corner connections for reliable protection against rain

Wooden floor with ground supports, roofing paper and accessories included.

SKAN HOLZ corner connections



Floor plan, cross-section and elevations M 1:100

**Flexi 2 420 x 300cm**

**Data sheet / construction description**



<b>Walls</b>	<b>28mm wooden planks</b> , untreated
<b>Roof</b>	<b>19mm profiled wood</b> , untreated
<b>Floors</b>	<b>19mm floor planks</b> , untreated
<b>Ground supports</b>	<b>6 each 60x60mm</b> , impregnated
<b>Iron parts</b>	<b>galvanized</b>
<b>Width x depth</b>	<b>420cm x 300cm</b>
<b>Height, eaves / gable</b>	<b>215cm / 262cm</b>
<b>Area / building volume</b>	<b>12,60m<sup>2</sup> / 30,05m<sup>3</sup></b>
<b>Roof inclination</b>	<b>17° / snow load max. sk = 0,75kN/m<sup>2</sup></b>
<b>Roof extension</b>	<b>Around circumference 20cm / roof surface 16,25m<sup>2</sup></b>
<b>Packaging unit</b>	<b>Width x length x height 120 x 460 x 53cm / 912kg</b>
<b>EAN</b>	<b>4018211 760275</b>
<b>Inclusive</b>	<b>1 door</b> (passage 150,8 x 184,5cm), <b>1 door</b> (passage 74,6 x 184,5cm), <b>1 layer of tarpaper for roofing</b> , <b>concealed tie rod construction</b> , <b>profiled corner connections</b>